

SOPHOS



integrated threat management

SOPHOS

A world leader in integrated threat management

- » Exclusive focus on protecting business, education, and government organizations
- » Reliable, rapid protection against viruses, spyware, Trojans, phishing, spam, and policy abuse
- » SophosLabs™ – a global network of threat analysis centers
- » Excellence in software and hardware design
- » Outstanding support services, including 24/7 technical support as standard
- » Over 35 million users worldwide
- » 20 years of stability and growth
- » An extensive network of skilled technical partners
- » Nine subsidiary offices and representation in over 150 countries
- » Multiple industry awards and product accreditations
- » Commitment to providing customers with unrivalled products and services

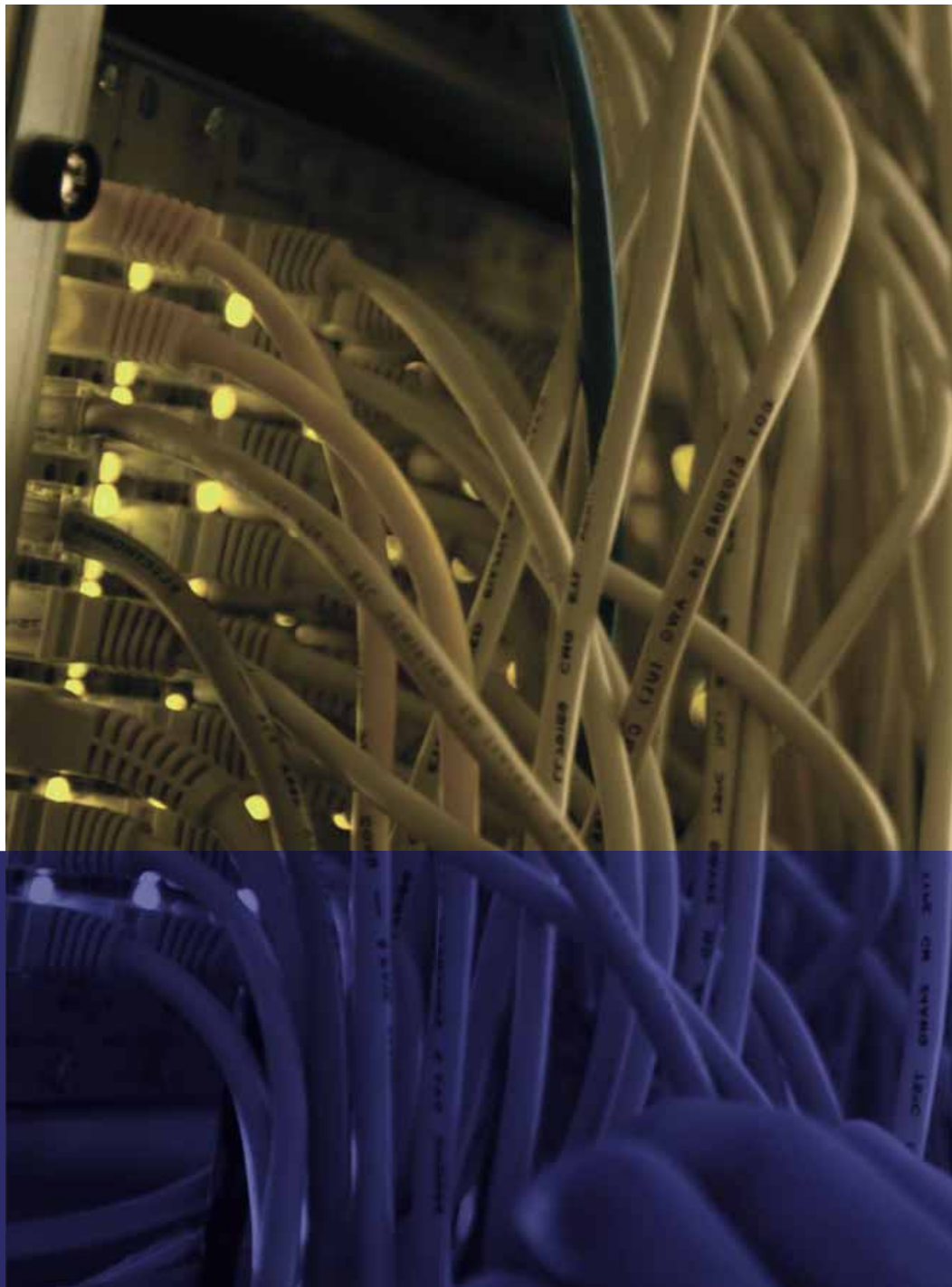


THE COMPLEX THREAT TO BUSINESS CONTINUITY

In today's continuously evolving threat environment, Sophos offers the most reliable, easy-to-operate defense against viruses, spyware, Trojans, phishing, spam, policy abuse and more – with solutions purpose-built for business, education, and government.

Financial motivation has driven virus writers and spammers to join forces to produce campaigns that combine virus, spam, phishing, and spyware attacks. The increasing complexity of these attacks and the speed with which new threats spread are radically changing the way that organizations need to protect their networks and information. Our award-winning products provide consistent, reliable protection across all network tiers, to help maintain business continuity in the face of even the most aggressive emerging threats.

With over 20 years' experience in countering evolving threats, our vision, commitment to research and development, and rigorous attention to quality have taken us from strength to strength. Along with 24/7 business-focused technical support, our stability and agility of response have led to the most satisfied customer base in the industry.



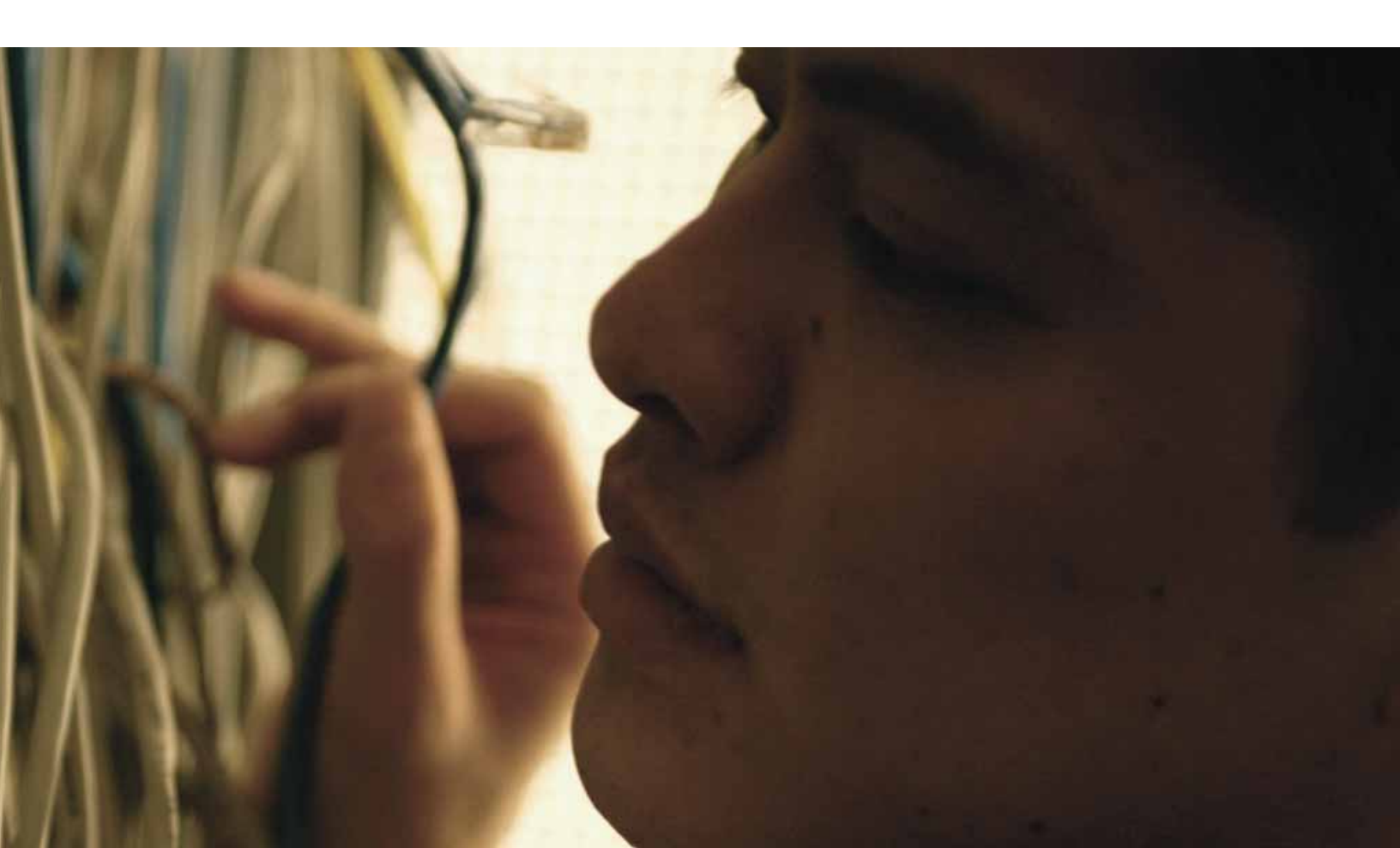
THE INTEGRATED SOLUTION TO MULTIPLE THREATS

Sophos delivers award-winning protection at every vulnerable point on a network – from the email gateway to endpoint desktops, servers, and laptops – defending organizations from even the most focused activities of today’s new cybercriminals.

As hackers, virus writers, and spammers join forces to exploit system vulnerabilities and find increasingly complex ways to get past network security, the distinction between different types of threat is no longer always clear.

A multi-vendor strategy introduces a vulnerability gap in an organization’s protection and reduces its ability to fully combat today’s hybrid, interconnected threats. Handling the threats and the different threat entry points separately leaves holes in the network defense.

Sophos’s cross-threat expertise and range of hardware and software provide a robust, consolidated defense, preventing organizations from incurring the very real cost and administrative overhead of having different vendors’ products at the gateway and endpoint.



Insight and control

Sophos products give IT departments the high degree of visibility needed to make informed decisions and exert effective control over the entire network, no matter how complex.

Sophos Enterprise Console lets you centrally deploy, update, configure, monitor, and manage your endpoint anti-virus and firewall software across

both Windows and Mac networks, while the Dashboard on our Email Security Appliance gives you the reporting and actionable information you need right up front. More complex environments can control their email through PureMessage, which includes sophisticated, flexible tools for customizing mail traffic, delivery, and policy.

So whatever type of solution you need to protect your organization's systems – from the plug-and-protect security of our appliance to the centralized management features of our gateway and endpoint software for complex environments – our products put control of threats firmly and securely in your hands.

“Sophos enterprise solutions are completely intuitive and we were up and running in less than an hour – the management capabilities are well designed, providing a single point for installation, configuration and monitoring.”

Henry C Torrance, Lead Computer Network Specialist
Department of the Environment, Maryland, USA

**purpose-built solutions
for business, education
and government**

Integrated endpoint security

- » Sophos Anti-Virus
- » Sophos Client Firewall
- » Sophos Enterprise Console

Gateway security products

- » ES4000 Email Security Appliance
- » PureMessage for UNIX
- » PureMessage for Windows/Exchange
- » SAV Interface
- » MailMonitor



POWERFUL TECHNOLOGY AND EXPERTISE FOR RAPID, PROACTIVE PROTECTION



Through a powerful combination of expertise, technology, and global visibility of emerging threats, SophosLabs provides the 24/7 research and rapid response organizations need.

SophosLabs – our global network of threat analysis centers – is strategically placed to make updated protection available before the working day even begins in many regions. With multiple variants of the same threat being constantly created and rapidly distributed, this speed of protection is critical to business continuity.

Already recognized in 2004 as being the fastest of all major security vendors to respond to new threats, we became 40% faster in 2005.*

- » Over 10,000 suspect files are analyzed by SophosLabs for malware every month
- » Millions of emails are analyzed for spam, phishing attacks, and zombie senders each day, with new spam rules being created every 30 minutes.

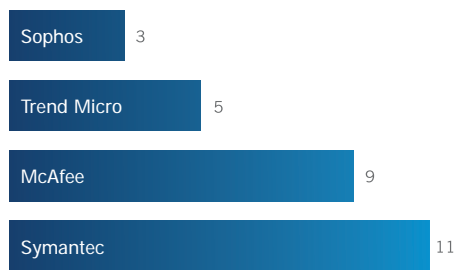
Day zero protection

The protection offered by our unparalleled response times to new threats is enhanced even further by the proactive protection that Genotype™ technology delivers at the gateway, desktop, laptop, and server. By identifying common attributes or “genes” that remain the same even when a spam message or a virus has been altered, Genotype technology detects new variants

of existing families of spam campaigns and viruses. It provides day zero protection to block the window of vulnerability that exists between a new threat emerging and protection being deployed. With new threats spreading worldwide in a matter of minutes and with the blending of different threat types making easy categorization and detection impossible, Sophos’s ability

to stay one step ahead of emerging threats gives organizations the rapid, reliable protection they need to maintain business continuity.

Genotype technology is incorporated in Sophos Email Security Appliance, Sophos PureMessage, and Sophos Anti-Virus.



Average response times (hours)*

“We’re finding that PureMessage cleans nearly 40,000 viruses from the university’s email each month and is accurately tagging 40% of our mailstream as spam.”

James Morris, Systems Engineer
University of Washington, USA

Sophos customers include:

- » Deutsche Apotheken und Ärztebank
- » Harvard University
- » Heinz
- » Interbrew
- » KPMG
- » Marks & Spencer
- » New York University
- » NSW Department of Commerce
- » Orange
- » Oxford University
- » Pulitzer
- » Royal Air Force
- » Sainsbury's
- » Siemens
- » Société Générale
- » Stanford University
- » Stiftung Warentest
- » Toshiba
- » University of California
- » University of Hamburg
- » University of Otago
- » US Federal Government Agencies
- » WWF
- » Xerox Corporation



UNRIVALLED CUSTOMER SATISFACTION AND SUPPORT

Sophos has repeatedly won awards recognizing the highest levels of customer satisfaction in the industry. Our 35 million users around the world include multinational organizations, 6 million administrators, teachers, and students (including 7 out of 8 US Ivy League schools), and over 2 million central and federal government employees. They all

benefit from our range of hardware and software products that are completely focused on the needs of organizations, not home users. Similarly, technical support is delivered 24/7 by a worldwide team of skilled, knowledgeable experts who understand our products and our customers' needs.



We consistently rank higher than other security vendors by delivering expert protection and a first-class service, with recognized virus detection and removal certification.

- » West Coast Labs: Spyware Checkmark
- » Virus Bulletin: 100% award 30 times
- » ICISA: virus detection and disinfection
- » Frost & Sullivan: European Security Company of the Year
- » Computing: Business Software Supplier of the Year
- » Deloitte Technology: Fast 50
- » VNU ImageTrak: top brand for customer satisfaction
- » Network World: "King of email policy"
- » Information Security: Gold Award for anti-virus product of the year

"We have not had to use Sophos technical support much at all, but when we do, it is available immediately – it goes beyond the services offered by many other technology companies."

Sherwyn Fernando, Information Systems Manager
McCabe Terrill law firm, Australia

Sophos products are engineered to protect businesses from viruses, spyware, Trojans, phishing, spam, and policy abuse. Award-winning technology, automatic updating, and intuitive management tools simplify the complex task of dealing with the velocity and quantity of new and emerging threats. Sophos expertise in integrated threat management provides multi-tier, cross-platform protection to safeguard every vulnerable entry point.

Endpoint security

Desktop computers and laptops are vulnerable to infection from a host of routes, such as CDs, USB storage devices, web browsers, memory cards, and MP3 players, making endpoint security more important than ever.

Sophos Endpoint Security

A centrally managed solution that integrates the control of award-winning anti-virus software and firewall security, simplifying the identification and elimination of threats on file servers, desktops, and laptops.

Sophos Anti-Virus

Protection from malware on over 25 platforms, including Windows, Mac, Linux, NetWare, UNIX, and NetApp Storage Systems.

Sophos Client Firewall*

An enterprise-class firewall that blocks worms, stops day zero threats and prevents intrusion from hackers.

Sophos Enterprise Console

A powerful tool that centrally deploys, updates, configures, monitors, and manages Sophos Anti-Virus and Sophos Client Firewall across file servers, desktops, and remote computers on Windows and Mac OS X platforms.

Email security

By stopping viruses, spam, and content security threats at the gateway and within internal email systems, organizations can reduce the risk and impact of outbreaks, spikes in email traffic, and the loss of confidential information.

Sophos Email Security Appliance

A fully integrated gateway hardware solution that provides effective, intelligent, and secure protection against viruses, spyware, Trojans, spam, and offensive content.

Sophos PureMessage

A secure, flexible software solution integrating anti-virus, anti-spam, and powerful policy enforcement capabilities, protecting against viruses, spyware, Trojans, spam, and email policy abuse at the UNIX gateway and on Windows/Exchange email servers.

SAV Interface

Software that enables third-party developers to harness the power of the Sophos malware detection engine by integrating it into their products and services.

Sophos MailMonitor

Software that provides protection against viruses and spyware for Notes/Domino servers and UNIX-based SMTP servers.

Leading edge technologies

Underpinning all Sophos products is a range of highly refined technologies and detection methods that protect against existing and emerging threats, no matter how complex the method of spreading. They include:

- » **Genotype™ detection technology:** provides preemptive day zero protection against new variants of existing families of virus and spam campaigns as they emerge, before specific detection capability is available, and even before Sophos has a sample to analyze.
- » **Reputation filtering:** spam detection technology that provides a significant improvement in message throughput by cross-referencing the sender's IP address against block lists and allow lists.
- » **Decision Caching™:** high-performance on-access scanning technology in Sophos Anti-Virus®, that optimizes performance by ensuring that only new or changed files are scanned for malware.
- » **Dynamic Code Analysis™:** detects the most complex encrypted viruses, using Sophos's VDL (virus description language) algorithm to test for malicious code.

Small business solutions

Sophos small business solutions tailor the power of Sophos Anti-Virus and Sophos PureMessage to provide organizations that have limited IT resource with easy-to-use, reliable protection against viruses, spyware, Trojans, and spam on Windows and Mac networks.

Sophos Alert Services

Sophos ZombieAlert™ Service provides organizations with immediate warning if spammers have hijacked any of their computers to send spam or launch Denial of Service attacks.

Sophos PhishAlert™ Service provides fast, near real-time alerts of phishing campaigns, so that financial and other targeted organizations can take steps to shut down the imitation website and protect their customers.



Sophos Email Security Appliance

Sophos Anti-Virus

	Windows 2000/XP/2003	Windows 95/98/Me/NT	Mac OS X ⁴	NetWare	UNIX ¹	Linux ²	OS/2	OpenVMS ³	NetApp
Centralized management	•	•	•						• ⁵
Management by exception	•	•	•						
Enforceable central Active Policy-based management*	•	•	•						
Integrated reporting	•	•	•						
Virus, Trojan, worm, and spyware detection	•	•	•	•	•	•	•	•	•
Centralized, integrated adware/PUA detection and cleanup*	•								
Performance-optimized on-access scans – InterCheck™		•	•	•			•	•	
Performance-optimized on-access scans – Decision Caching™	•					•			
Genotype™ virus detection technology	•	•	•	•	•	•	•	•	•
Integrated auto-update	•	•	•			•			
Centralized remote cleanup	•								
Integrated scheduler	•	•		•	cron	cron	•	DCL	
On-access scanning	•	•	•	•		•	• ⁶		•
On-access disinfection	•	•	•			•			•
On-demand scanning	•	•	•	•	•	•	•	•	
Intelligent file recognition™	•	•	•	•		•	•		•
Cisco NAC support*	•								
64-bit support	•*		•		• ⁷			• ⁷	
Automated updates	•	•	•	•	• ⁸	• ⁹			•
Bandwidth throttling*	•	•							
Minimum OS version	Win 2000	Win 95	10.2	4.2			3.0	4.0/4.1	Data ONTAP ¹⁷
Language support	• ¹⁰	• ¹⁰	• ¹¹	• ¹²	• ¹¹	• ¹¹	• ¹²	• ¹²	• ¹²

Sophos Client Firewall

	Windows 2000/XP/2003
Centralized management	•
Port blocking and control	•
Application filtering and control	•
Stealth mode protection from hacking	•

SAV Interface

	Windows 2000/XP/2003	Windows 95/98/Me/NT	Mac OS X	NetWare	UNIX ¹	Linux ²	OpenVMS ³
	•	•	• ⁴	•	•	•	•

Gateway

	ES4000 Email Security Appliance	PureMessage for UNIX ¹³	PureMessage for Windows/Exchange ¹⁴	MailMonitor for Notes/Domino ¹⁵	MailMonitor for SMTP ¹⁶
Inbound and outbound mail scanning	•	•	•	•	•
Genotype virus detection	•	•	•	•	•
Genotype spam detection	•	•	•		
Outbreak protection	•	•	•		
Single-pass checking for viruses and spam	•	•	•		
True file type identification	•	•	•		
Sophos IP Block List reputation filtering	•	•	•		
Quarantine of suspected spam	•	•	•		
Protection against new spamming techniques	•	•	•		
Attachment blocking	•	•	•		•
Inbound and outbound policy enforcement	•	•	•		
Centralized secured web-based administration	•	•			
Single, integrated management console	•	•	•		
Microsoft Management Console for administration			•		
Multi-server administration and reporting		•	•		
Customizable user preferences	•	•	•	•	•
End-user quarantine	•	•	•		
Automatic updates	•	•	•	•	•
Message sender checks	•	•	•		
Threat reduction technology	•	•	•		•
Integrated groupware protection			•	•	
Windows cluster support (active/passive)			•		
Usenet (NNTP) message protection			•		
Active Directory integration	•		•		
Appliance-only features					
Plug-and-protect setup	•				
Smart preset security configuration	•				
End-to-end message forensics	•				
Automatic capacity optimization	•				
Automated diagnostics and alerting	•				
Remote system heartbeat monitoring	•				
On-demand remote assistance	•				

- AIX/Power PC, Tru64 (Digital UNIX)/Alpha, FreeBSD/Intel, HP-UX/HP-PA, HP-UX/IA64, Solaris/Intel, Solaris/SPARC, SCO OpenServer/Intel, SCO UnixWare/Intel
- On-access and on-demand scanning: Red Hat Linux 7.2/8.0/9.0, Red Hat Enterprise Linux ES 2.1/3, Red Hat Enterprise Linux AS 2.1/3, Red Hat Enterprise Workstation 2.1/3, SUSE Linux 7.2/8.0, SUSE Linux Enterprise Server 8.0/9.0, SUSE Linux Professional 9.0/9.1/9.2/9.3, TurboLinux Enterprise Server 8, TurboLinux 8/10 Server. On-demand scanning only: TurboLinux 6 AS/7 on Intel, Red Hat Linux 5.1/5.2/6.0/6.1 on Intel, SUSE Linux 6/8 on Intel, Red Hat Linux 5.1/5.2 on Alpha
- VAX 5.4-3; Alpha 1.5 to 7x
- Macintosh OS X 10.2/10.3/10.4
- Through MMC
- Requires OS/2 version 4.0
- See www.sophos.com for up-to-date platform list
- Using EM Library. AIX/Power PC, Tru64 (Digital UNIX)/Alpha, HP-UX/HP-PA, FreeBSD/Intel, Solaris/Intel, Solaris/SPARC (requires Windows server)
- Using EM Library or directly from Sophos
- English, French, German, Italian, Japanese, Simplified Chinese, Spanish, Traditional Chinese
- English, French, German, Japanese, Spanish
- English
- Linux on x86 (Red Hat 7.3 to 9.x, Enterprise Server 2.1 to 4), SUSE Linux on x86 (Enterprise Server 8 to 9, Professional 8 to 9), Solaris/SPARC (2.6 to 9), HP-UX/PA (11.0 to 11.1), FreeBSD on x86 (4.5 to 4.10)
- Windows 2000/XP/2003, Exchange 2000/2003, supports VSAPI
- Lotus Domino R4.5/R4.6x/R5/R6/R6.5 on Windows
- Solaris 8+, Linux glibc2.2+
- Version 7.x

PureMessage for UNIX can be bought as separate modules: anti-virus, anti-spam and policy enforcement

Sophos is the world leader in integrated threat management solutions purpose-built for business, education and government. Through 20 years of experience, combined in-house anti-virus and anti-spam expertise, and a global network of threat analysis centers, we respond rapidly to emerging threats – no matter how complex – and achieve the highest levels of customer satisfaction in the industry.



Boston, USA • Mainz, Germany • Milan, Italy • Oxford, UK • Paris, France
Singapore • Sydney, Australia • Vancouver, Canada • Yokohama, Japan

NA-ITM-1/0602 © Copyright 2006. Sophos Plc. All rights reserved. All trademarks are the property of their respective owners.

SOPHOS
WWW.SOPHOS.COM